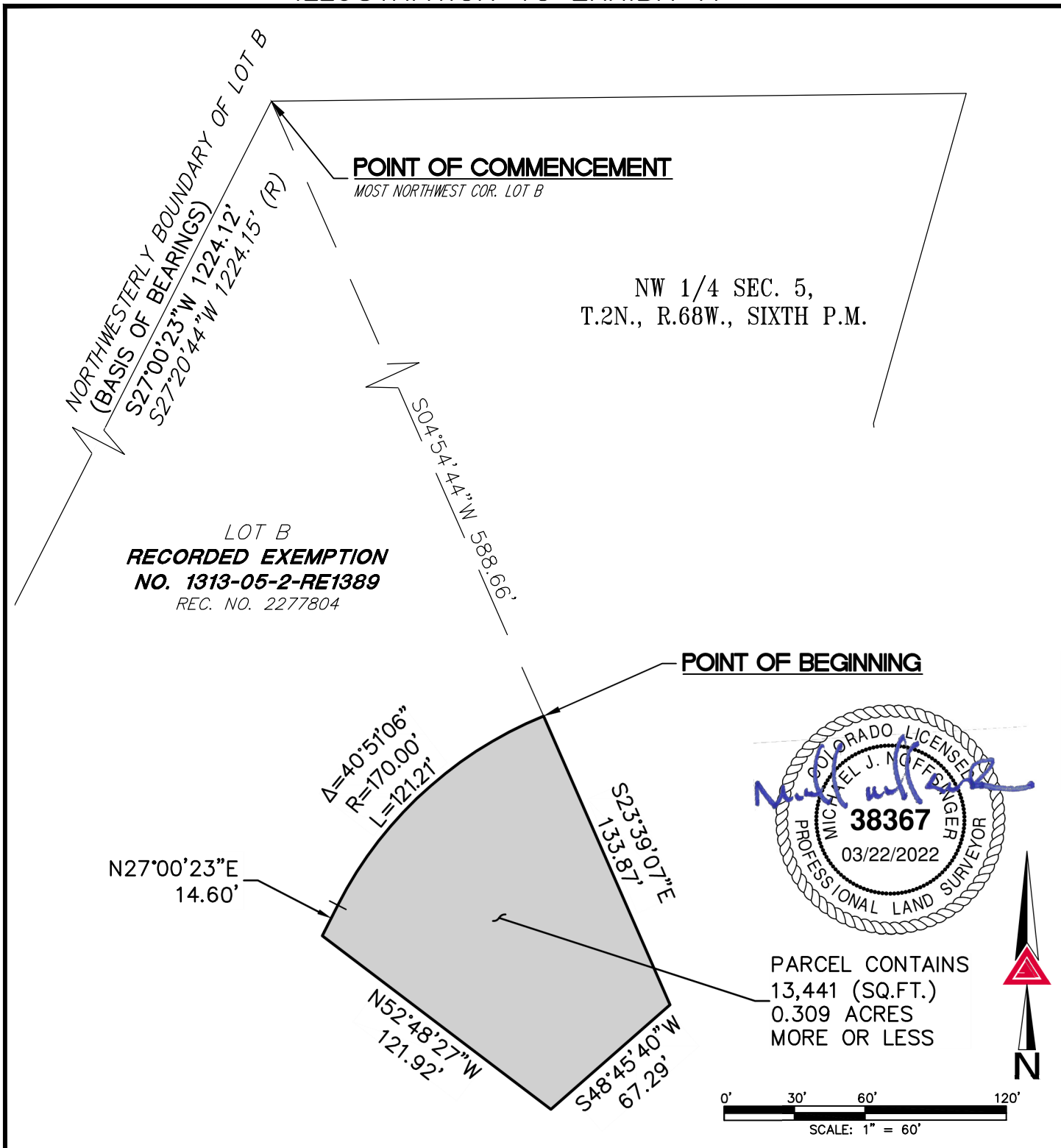


ILLUSTRATION TO EXHIBIT A



NOTE: THIS ILLUSTRATION DOES NOT REPRESENT A MONUMENTED LAND SURVEY AND IS ONLY INTENDED TO DEPICT THE ATTACHED LEGAL DESCRIPTION.

PATH:
DWG NAME: DIRECTOR'S PARCEL 2
DWG: HAS CHK: MJN
DATE: 03/21/2022
SCALE: 1" = 60'

Q:\54821-19 - Union Toll Brothers - ALTA\Dwg\EXHIBITS
300 East Mineral Ave,
Suite 1
Littleton, Colorado 80122
Phone: (303)713-1898
Fax: (303)713-1897
www.aztecconsultants.com

DIRECTOR'S PARCEL
NW 1/4 SEC. 5, T2N., R68W., 6TH P.M.
WELD COUNTY, COLORADO
JOB NUMBER 54821-19 2 OF 2 SHEETS